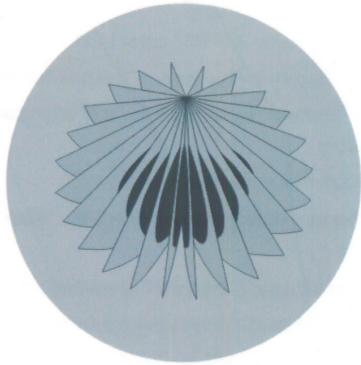


Palm Bladder Scanner PBSV



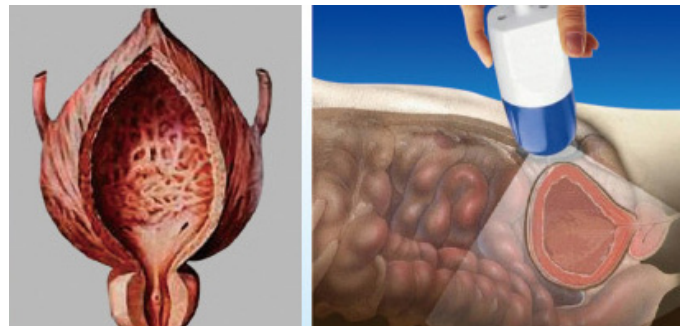
The Meike Palm Bladder Scanner is a real time handheld noninvasive device with advance 3-D Ultrasonic technology. Through ultrasonic echo technology it easily differentiates between the bladder and surrounding structures.

It accurately measures bladder and residual volumes. The system is ideal for scanning male, female and paediatric patients in real time.

Excellent for training and illustrating pelvic floor exercises. Suitable for hospital environments and it's light weight portability makes it ideal for community service providers and private practice.

Features:

- Light weight portability
- 8" colour LCD TFT screen
- User friendly software
- Easy to operate
- Ability to store and review patient images and records
- Accurately measures bladder and residual volumes
- USB connectivity for data transfer to PC
- Software upgrades via Internet
- Long life lithium battery
- In-built smart calibrating program
- Connection to an external printer



Palm Bladder Scanner PBSV

Applications:

Urology, Obstetrics and Gynaecology, Rehabilitation, Emergency departments, General surgery, Paediatrics, ICU, Community Health Centres.

Specifications:

Transducer frequency: 2.6 MHz

Scan mode: mechanical scan

Scan depth: > 140mm

Sway angle: $120^{\circ} \pm 2^{\circ}$

Rotating angle: $180^{\circ} \pm 2^{\circ}$

Display: 8" colour LCD TFT screen

Power supply: Lithium battery

Data storage: 100 patient records

Patient ID: 12 digits

Maximum measurement: 999ml

Measurement difference: $V \pm 15\%$ ($0 > V > 150\text{ml}$)

$V \pm 10\%$ ($150 > V > 999\text{ml}$)

Scan mode: Male, Female, Paediatrics

Interface language: English

Weight: 2.5kg with battery

2 USB ports (1 for printer, 1 for PC connectivity)

